



Darya Commercial Complex

ARSH 4D Studio

RESIDENTIAL	SENIOR	2015	> 100+ M2	SMALL BUILDING	SMALL COMPLEX	TEHRAN	COMPLETED	1ST PRIZE
COMMERCIAL	PROJECT MANAGER	2014	> 1,000+ M2	MEDIUM BUILDING	MEDIUM COMPLEX	IRAN	UNDER CONSTRUCTION	2ND PRIZE
CULTURAL	ARCHITECT	2013	> 10,000+ M2	LARGE BUILDING	LARGE COMPLEX	OTHER COUNTRIES	COMPETITION	3RD PRIZE
OFFICE	3D DESIGNER	2012	> 100,000+ M2	INTERIOR	X-LARGE COMPLEX		CANCELED	HONORABLE MENTION
PUBLIC		2011						

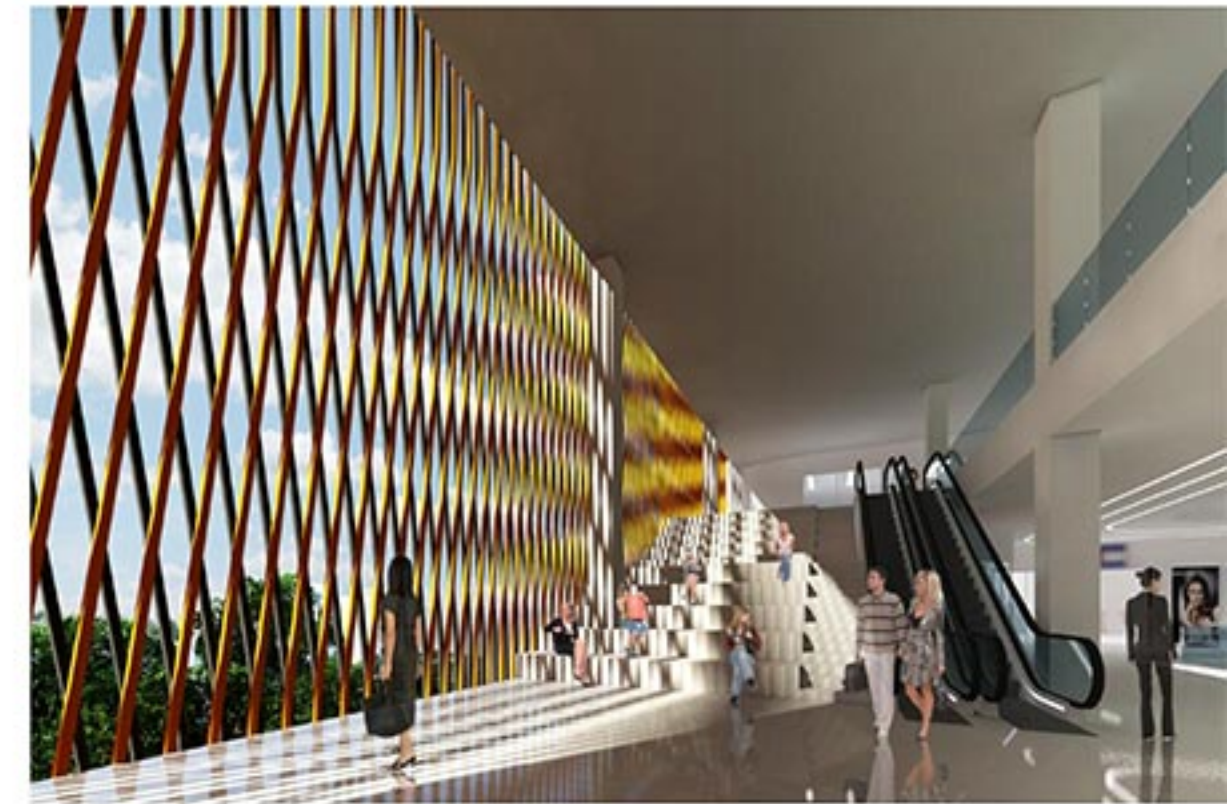
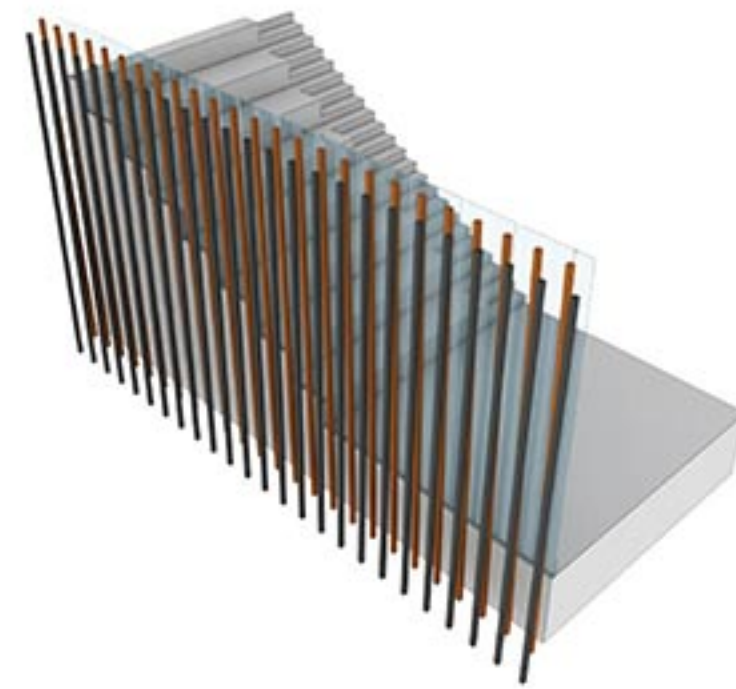
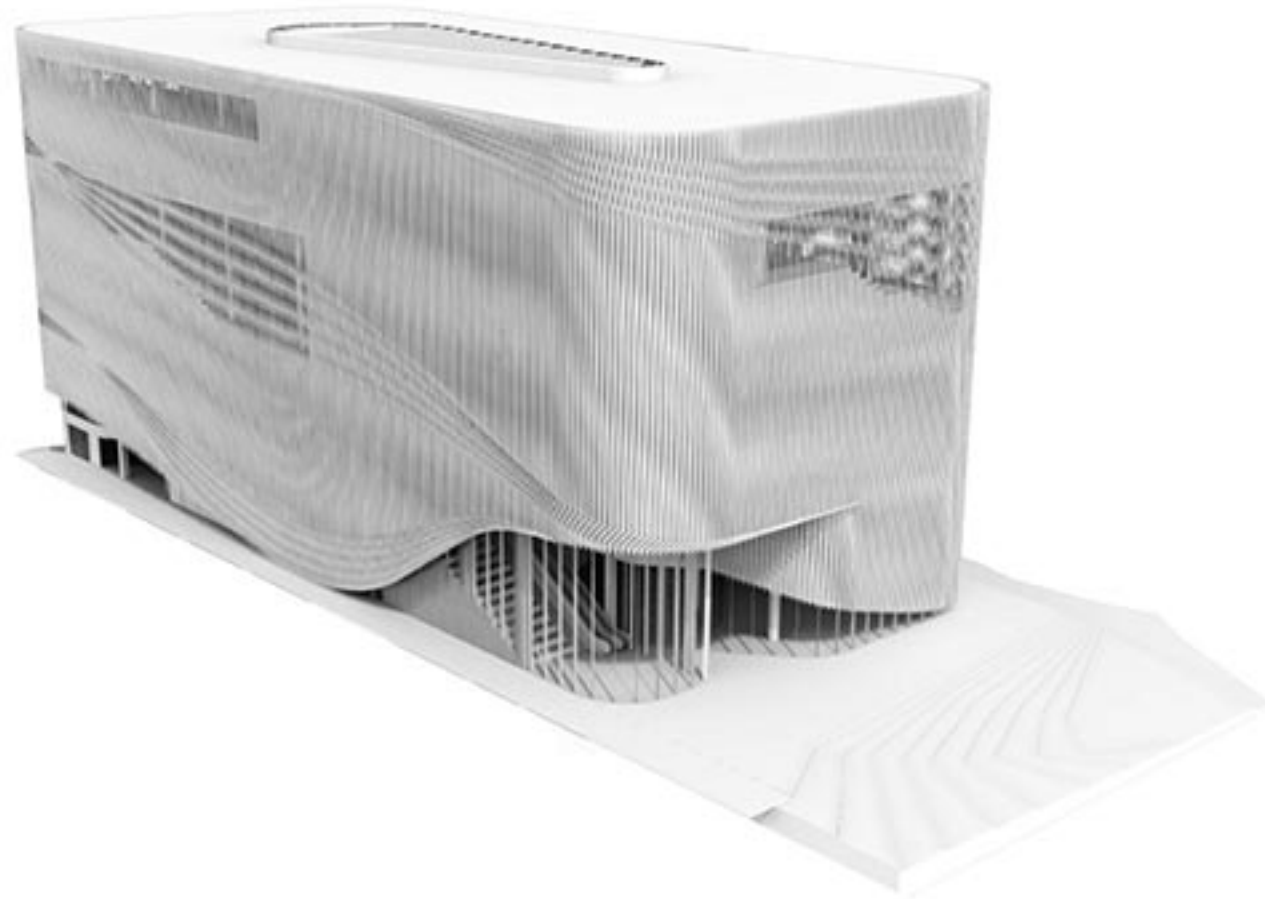


The strategy for the building enclosure consists of creating an OPTICAL ILLUSION. The facades feature two layers of customized aluminum extrusion profiles on top of a back layer of composite aluminum cladding.

The vertical profiles of the top layer are straight; but those of the back layer are angled. This results in a wave-like appearance, which changes with the viewpoint of the spectator (Moiré effect).



Tehran, Iran, Professional Project, 43,000 sqm
Arsh[4D] Design Studio
Won the 3rd prize
2013



Responsibility :

Member of the design team in competition, Responsible for Designing Landscape and Facade, Modeling and Rendering and Post Production. Proposed the idea of Facade and OPTICAL ILLUSION. We decided to have two layers of Black Vertical Profiles and Copper Angular Profiles which made OPTICAL ILLUSION in the facade.

